

AV – 2951

Sixth Semester B. Arch. Examination

ESTIMATE AND COSTING

Paper – 06 AR 04

(USC – 10050)

P. Pages : 3

Time : Three Hours]

[Max. Marks : 80

-
- Note :** (1) All questions carry equal marks.
(2) Answer **Four** questions.
(3) Question No. **Five** and **Six** is compulsory.
(4) Use of slide rule, logarithmic tables, Steam tables, Mollier's Chart, Drawing instrument, Thermodynamic table for moist air, Psychrometric Charts and Refrigeration charts is permitted.
(5) I.S.I. Hand book for structural Steel section, I.S. Code 800/1962 or 1964, I.S. 456 (Revised) I.S. 875 may be consulted.
(6) Use pen of Blue/Black ink/refill only for writing the answer book.

1. (a) Why are the detailed estimates of a project prepared and what costs do they include ?
(b) Mention the general principle of the approximate methods of costing. 20

OR

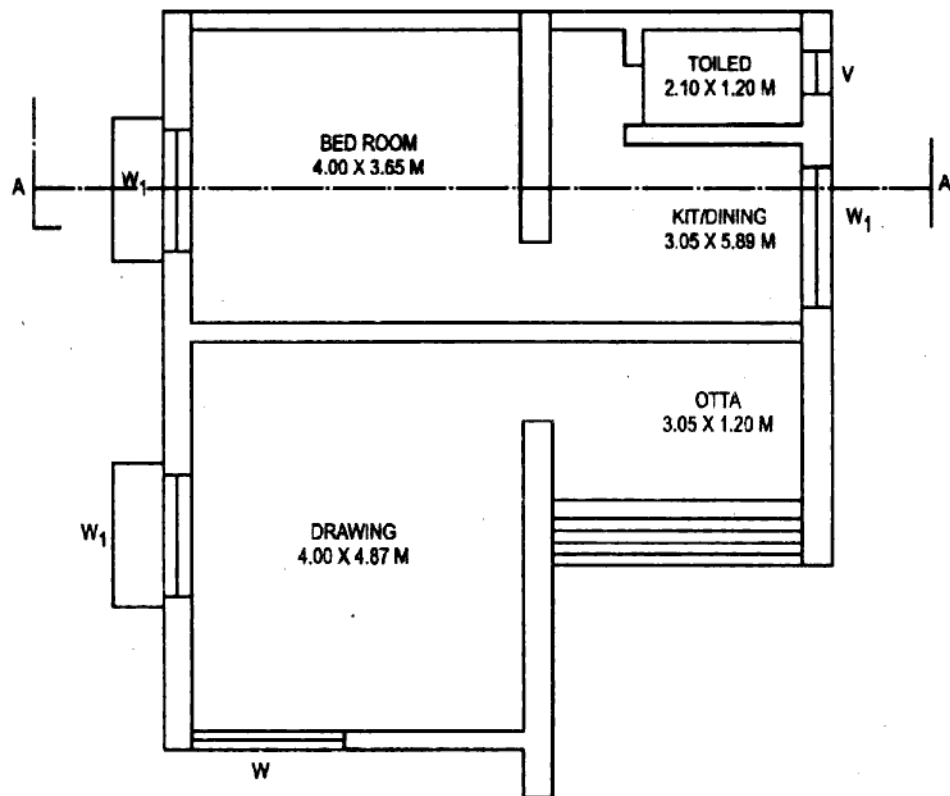
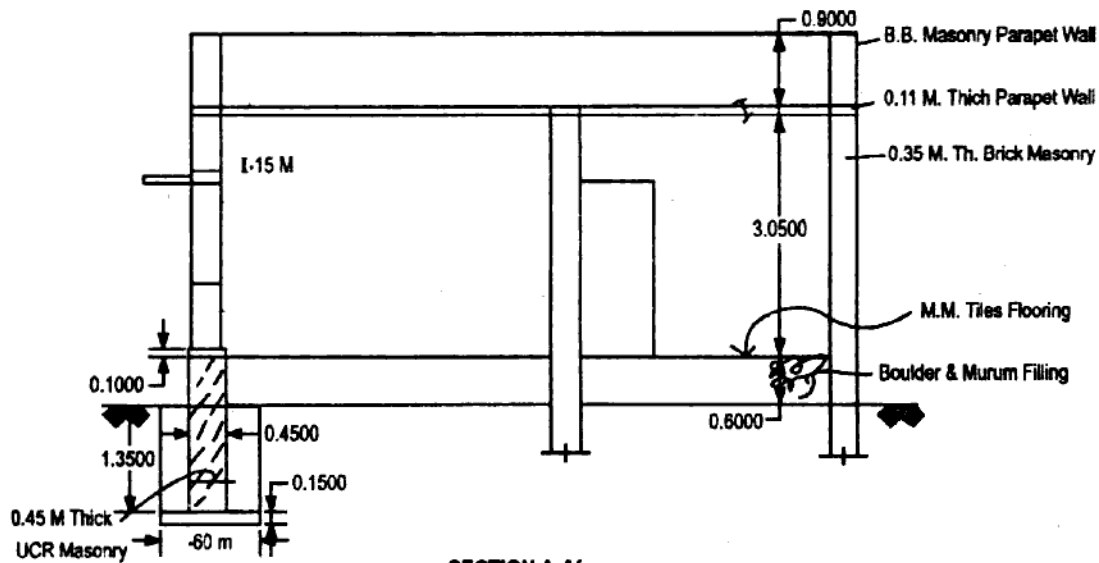
2. (a) What costs does a complete estimate includes ?
(b) What are the essential requirements of a valid contract ?
(c) Mention the percent analysis of various sub-items of a typical residential building. 20
3. (a) How can a contract be terminated or discharged ?
(b) What are the elements which a tender form must contain ?
(c) Describe the factors affecting the rate analysis of an item. 20

AV-2951

P.T.O.

OR

4. (a) Describe the factors affecting the rate analysis of an item.
(b) What is the difference between work charge establishment and contingency ?
(c) What does the task work per day represents ? How is it calculated ?
20
5. Write short notes on (any **Four**) :—
(a) Detailed estimate.
(b) Standard costing.
(c) Minor factors affecting rate analysis.
(d) Use of an estimates.
(e) Essentials of an Estimator.
(f) Method of taking out Quantities.
20
6. From the given figure work out the quantity of the following :—
(a) Door's and Window's.
(b) Quantity of R.C.C. slab.
(c) External plaster.
(d) Quantity of Parapet Wall.
20



All Dimension's are in M

W	- Window	- 1.82 x 1.20 M	- Fully Glazed Window
W ₁	- Window	- 1.50 x 1.20 M	- Fully Glazed Window
V ₂	- Vent	- .75 x .45	- Fully Glazed Window
D	- Door	- 1.20 x 2.10	- Fully Panelled Door
D ₁	- Door	- .90 x 2.10	- Fully Panelled Door
D ₂	- Door	- .75 x 2.10	- Fully Panelled Door

